

Surfstatslive on Windows 2008 Server R2

Install Windows 2008 Server

Go to Start - Administrative Tools - Server manager - Roles - Add Roles - Server Roles

Tick Web Server (IIS) and click on Next and again on Next

Tick ASP and click on Add Required Role Services

Tick IIS 6 Management Compatibility (under management Tools) and click on Next

Click on Install and after installation has succeeded, click on Close

Run the Surfstatslive setup program and fill in the required details when the Surfstatslive Global Setup starts:

SurfStatsLive Global Setup

Authentication | **Web Server** | Identities | Information

Please make sure IIS and Windows are set up properly before continuing by pressing the button below

IIS and Windows Setup Requirements

Server Administrators authentication details.

User Authentication Provider
SurfStatsLive

Server Administrator Group
<Not Applicable>

Server Administrator Username
Administrator

Password

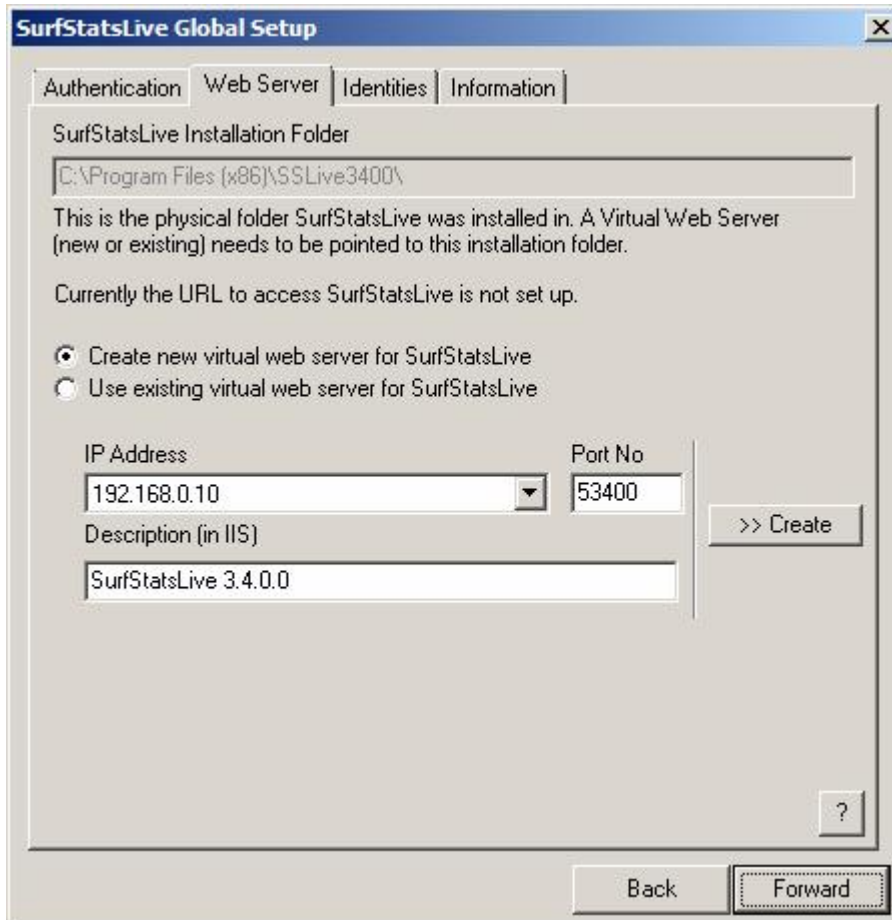
Confirm Password

(Leave blank if not changed)

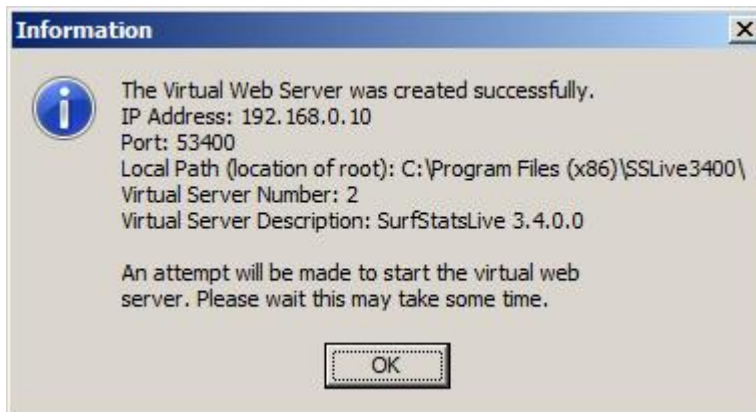
?

Back Forward

Click on Forward



Click on Create



Click on OK

Click on Forward on the Web Server tab in Surfstatslive Global Setup

SurfStatsLive Global Setup

Authentication | Web Server | **Identities** | Information

Here you can specify the Windows account under which the SurfStatsLive Merging Service will run. Change to something else than LocalSystem if collecting log files from other computers. **YOU CAN SET THE ACCOUNT ONLY AFTER INSTALLATION.**

Username (samples: Administrator or Domain\Administrator)
 (leave blank to use LocalSystem account)

Password

Confirm Password

Here you can specify the account under which the SSLive and Export COM+ package will run. It is highly recommended that you change this. Default is Interactively logged on user, for which a user needs to be logged in at the server console.


Username (samples: Administrator or Domain\Administrator)
 (leave blank to use Interactively logged on user)

Password

Confirm Password

Click on Set

Information

 Identity for SSLive and Export COM+ package successfully set.

Click on OK

Click on Forward in the Identities tab in Surfstatslive Global Setup

SurfStatsLive Global Setup [X]

Authentication | Web Server | Identities | **Information**

Here you can specify info about your organization, the provider of the SurfStatsLive Service. Your customers will see this when they click the Customer Support link.

Your Organization Name

Support Email address

Support Telephone#

Support Fax#

Default Logo URL

Show tips at startup

Back Done

Fill in details as and if required and click on Done

SurfStatsLive Reporting Server 2011.1.1 - InstallShield Wizard [X]

InstallShield Wizard Completed

The InstallShield Wizard has successfully installed SurfStatsLive Reporting Server 2011.1.1. Click Finish to exit the wizard.

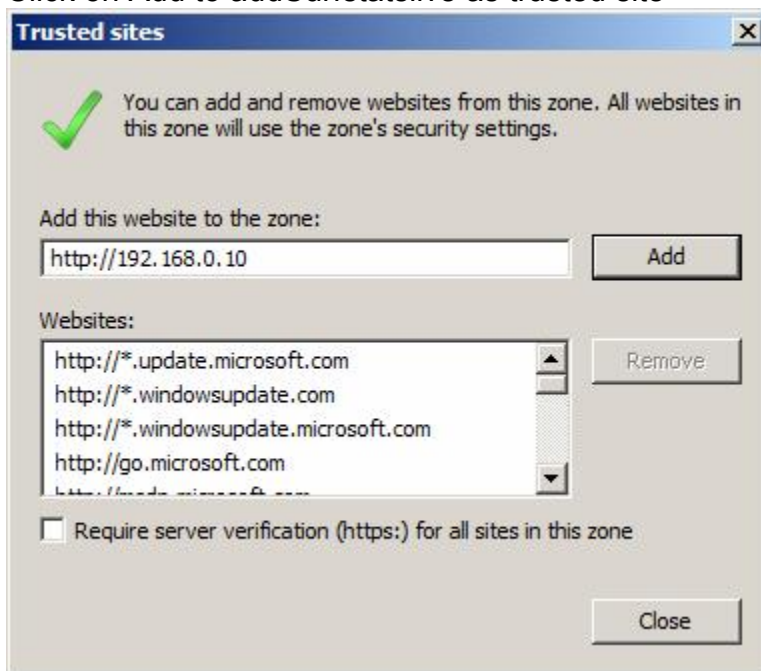
< Back Finish Cancel

Click on Finish

Click on the Surfstatslive desktop icon. This will open IE and the following screen may appear.



Click on Add to add Surfstatslive as trusted site



Click on Add again and then on Close

SurfStats Live

Real-Time Reporting Server

Login

Please provide your username and password below. You need an existing login. If you do not have an existing login please contact your web site host to obtain one. For all other users passwords for Server Administrators are case-sensitive.

| | |
|--------------------------------------|-----------------------------------------------------|
| User name | <input type="text" value="Administrator"/> |
| Password | <input type="password" value="••••••••"/> |
| Log in as a..... | <input type="text" value="Server Administrator"/> ? |
| <input type="button" value="Login"/> | |

Fill in your login details and click on Login

The screenshot shows the SurfStats Live Server Administration interface. At the top, there are tabs for "Profile Groups", "Profiles", and "Options". Below the tabs, there is a "Start" dropdown menu set to "MyGroup". Below that, there is a "Show" dropdown menu set to "10", with "Go" and "Next" buttons. Below the "Show" dropdown, there is a "[New Group]" link and the text "Groups 1-1 of 1". Below this, there is a table with the following content:

| | | | | | |
|--------------------------------|--------------------------|--------------------------|--------------------------|--------------------------|--------------------------|
| MyGroup | | | | | |
| (SLMULTI2- Max 50 Profiles) | | | | | |
| demo | <input type="checkbox"/> | <input type="checkbox"/> | <input type="checkbox"/> | <input type="checkbox"/> | <input type="checkbox"/> |
| demoenterprise | <input type="checkbox"/> | <input type="checkbox"/> | <input type="checkbox"/> | <input type="checkbox"/> | <input type="checkbox"/> |
| [New Profile] | | | | | |

A red arrow points to the "Report" button (represented by a document icon) in the "demo" row of the table.

Click on the Report button and you should get the report

SurfStats Live

Real-Time Reporting Server

Traffic **Conversion**

▼ **Traffic Reports**

- Summary Statistics
- Hour of Day Activity
- Day of Week Activity
- Day of Month Activity

New! Free SurfStatsLive stats feed to your desktop - [Click here](#)

Calendar **Options**

Period:
Complete log

| December 2004 | | | | | | |
|---------------|----|----|---|---|----|----|
| S | M | T | W | T | F | S |
| 28 | 29 | 30 | 1 | 2 | 3 | 4 |
| 5 | 6 | 7 | 8 | 9 | 10 | 11 |

Summary Statistics - de

Report Range: 6 Dec 2004 00:00

This section shows a summary c

Legend ■ **Humans** ■ **Spi**

Visits by Day

| Category | Visits |
|----------|--------|
| Humans | ~300 |
| Spiders | ~5 |

You can now start setting up new site profiles.